

Understanding Truck Drivers

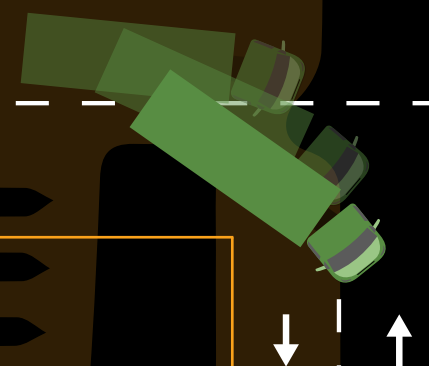
MERGING

Trucks and buses have less acceleration capacity and need more space to maneuver.

Keep in mind

The difference in speed when you see a truck or bus merging onto the road will mean you reach it very quickly and you will have to brake to keep a safe distance.

When merging perpendicularly onto two-way roads, most trucks and buses will need to enter the oncoming lane of traffic in order to turn.



Since you know how difficult it is for them to merge onto roads where other vehicles are driving, try to help trucks and buses with this maneuver by leaving them space and signaling this to them.